

Industrial Accident Prevention Solution

Safe

Insight



## • What is Safe insight?

Safe insight is an **AI based solution** that helps to **prevent serious accidents**. By using AI technology, Safe insight will protect workers to be exposed from various risks in the industrial sites



### Intelligent image recognition

Using advanced object recognition and classification models, various risk factors of workers will be detected and notified in advance



### Tag-based composite positioning technology

Wi-Fi FTM-based high-precision complex indoor positioning technology collects and analyzes worker location and status information to detect risk factors in real time



### Integrated monitoring system

Provides real-time risk status, statistical and safety KPI information, and various risk notification services through the web and mobile apps

## • Features of Safe insight



### 01 Solutions for preventing industrial accidents








It is a solution that can prevent accidents in advance, rather than reacting late after the accident occurs at the industrial sites

### 02 Solution that has been proved and verified in the field

It is a proven solution in industrial sites of various sizes and surroundings, from small/medium-sized manufacturing plants to large shipyards. We are about to sign contracts to supply solutions with Lantern Systems for sales in the Middle East, including Saudi Arabia, and cooperate with GTS to supply solutions to global companies such as L&T, ARAMCO, SABIC, and IMI Shipyard



### 03 Flexible solutions through various selections and H/W configurations

Package ⊕ CCTV only	Package ⊕ TAG only	Package ⊕ CCTV + TAG	Optional
	 	 	 
CCTV (Ready-made)	Complex Location Tag Wifi-AP (Ready-made)	CCTV (Ready-made) Complex Location Tag & Wifi-AP	Signal Lamp (Ready-made) IoT env-sensor (Ready-made)

Safe Insight can be applied by package depending on the business size, purpose, environment, etc., and it provides the optimal solution through flexible H/W configuration and additional options. CCTV cameras can be linked to existing equipment, and commercial products that support FTM can be used as W-Fi APs for Tag positioning.

## • Main Function of Safe insight

### 1) Accident prevention based on CCTV image recognition



PPE violations Monitoring



Obstacle monitoring



Dangerous and restricted area monitoring

### 2) Comprehensive location-based collision prevention for moving objects

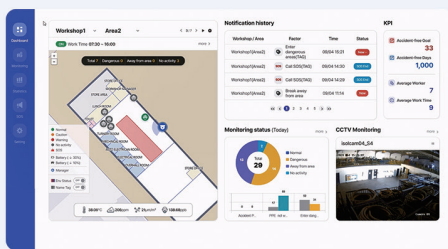


Collision Prevention between vehicles and workers

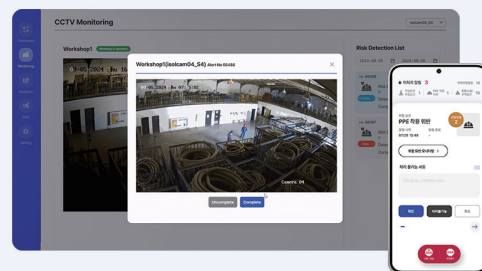


Automatic notification through manual request or status analysis in case of emergency

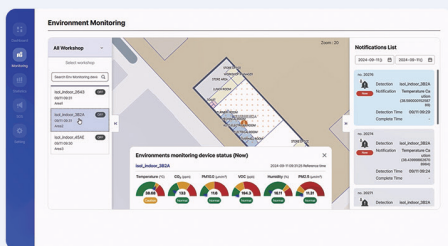
### 3) Integrated monitoring and notification service



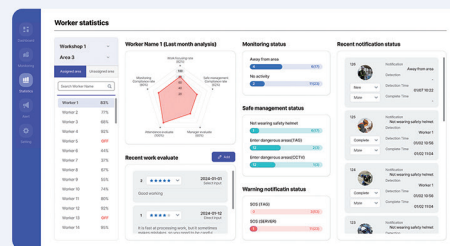
Dashboard shows real-time location and alerts



Video notification history and manager APP



Weather/environmental information and notification history



Workplace, worker analysis statistics



• Specification of Core Equipment

**Exclusive Equipment**

**Hubilon Exclusive TAG Point insight 2.0**

	Item	Details
	Function	• Wi-Fi FTM, BLE, IMU Sensor
	Size	• 70 × 60 × 20mm
	Battery	• Built-in battery 4,200mAh
	Etc	• IP65 (waterproof and dustproof)

**Ready-made equipment**

**CCTV Camera**

	Item	Details
	Function	• Support Full HD CCTV Camera

**Wi-Fi AP**

	Item	Details
	Function	• Universal Wi-Fi AP supporting Wi-Fi RTT and associated FTM features in the IEEE 802.11mc Wi-Fi Location standard
	Compatible Products	• Google AC-1200, HPE Aruba AP-505, NETGEAR orbi Micro RBR20, etc

If you have any questions about **Safe insight**,  
the ultimate industrial safety prevention solution, please contact us, **Hubilon**

**CONTACT US**

- Address** | 5<sup>th</sup> Fl. Namgang Bldg. 1340-6 Seocho-dong, Seocho-gu, Seoul, Republic of Korea, 06729
- Tel** | +82-2-571-4169 / +82-2-571-4134
- Homepage** | [www.hubilon.com](http://www.hubilon.com) / [www.safeinsight.co.kr](http://www.safeinsight.co.kr)
- E-mail** | [safe@hubilon.com](mailto:safe@hubilon.com)